

Slide Screen

Now, turn your attention to the other end of the housing. If you are using a dampener (the brake system), now insert it as shown fig 4), and then place the bushing into the groove of the tube. Push the end cap pins into their openings and tap evenly with a soft mallet until the end cap is flush with the end of the housing. Now insert the screw provided to secure the caps to the housing (take care to insure the screw goes into the hole in the housing; if it misses it will be against the mesh and possibly cause damage to it ~ see fig 3).



fig 1

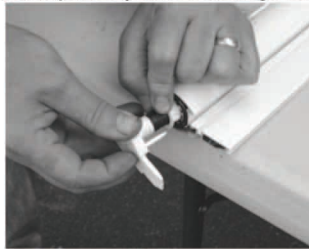


fig 2

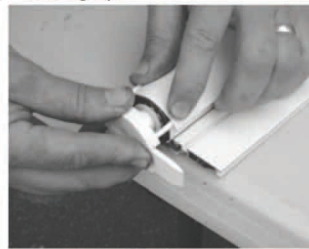


fig 3

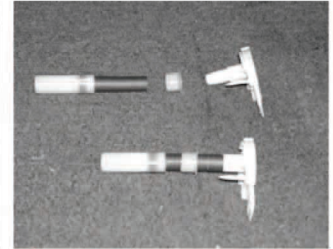
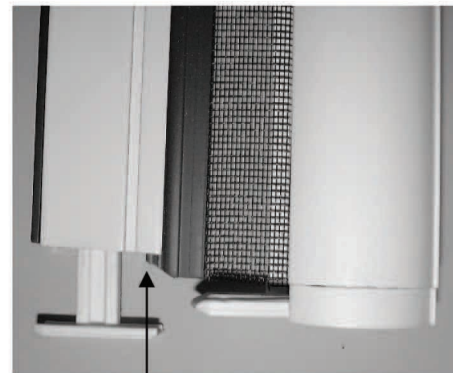
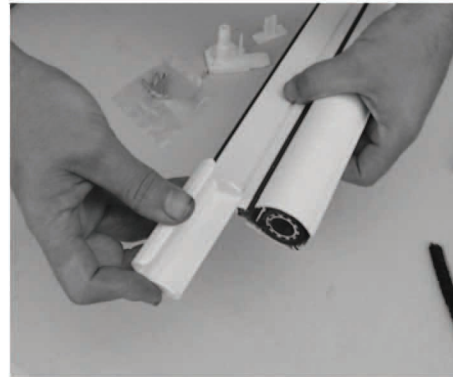


fig 4 (Optional Brake)

While you are on this end slightly pinch the groove on the pull bar where the magnet rests (to prevent it from sliding), and insert the end cap into the pull bar. Now go to the other end, install the handles (handle styles may vary), insert the magnet and cut it to length. Again pinch the end of the pull bar to hold the magnetic strip from sliding and insert the end cap.



Since you have cut the pull bar slightly shorter than the other cassette components it is necessary that you slightly trim the PVC on the bottom edge of the door so that the end cap will rest flush to the pull bar once inserted.